

## LO12 - From Lodi to Abbadia Cerreto

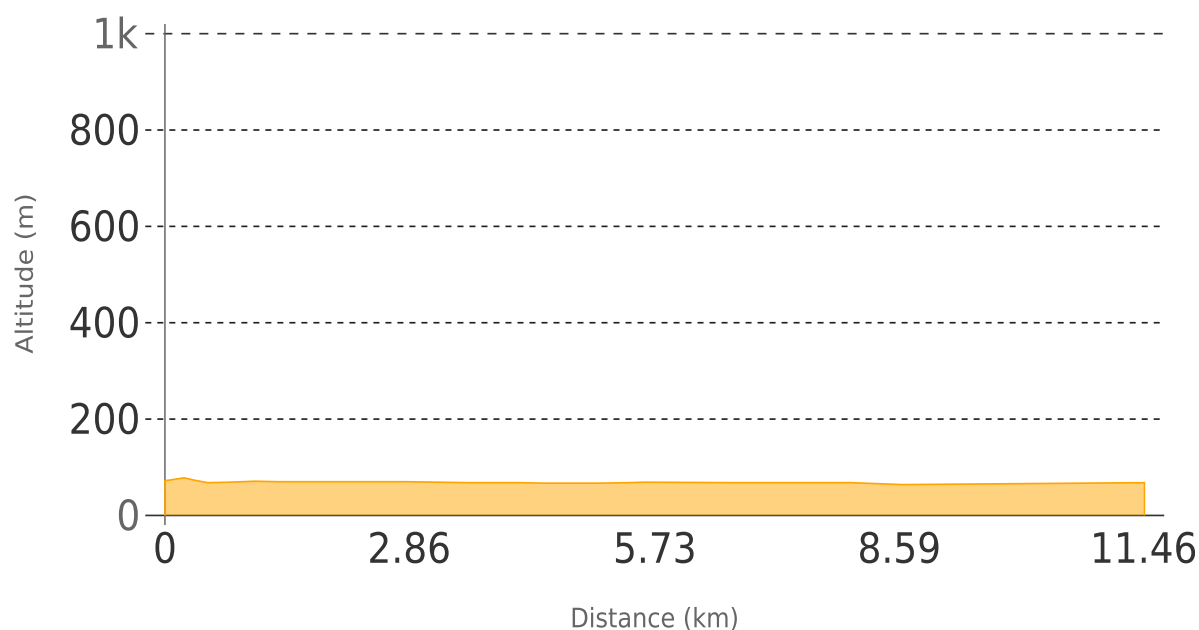
---

<b>Start node info</b>	Lodi, railway station
<b>End node info</b>	Abbadia Cerreto
<b>Total length</b>	11.5 km
<b>Category</b>	Cycling
<b>Suggested type of bicycle</b>	Hybrid
<b>Cycle time</b>	00:34 (hh:min)
<b>Uphill</b>	13 m
<b>Downhill</b>	16 m
<b>Max height</b>	78 m
<b>Difficulty by cycle</b>	Easy
<b>Coated</b>	96 %
<b>Offroad</b>	4 %
<b>Cyclability</b>	100 %
<b>On cycle road</b>	28 %

### Description

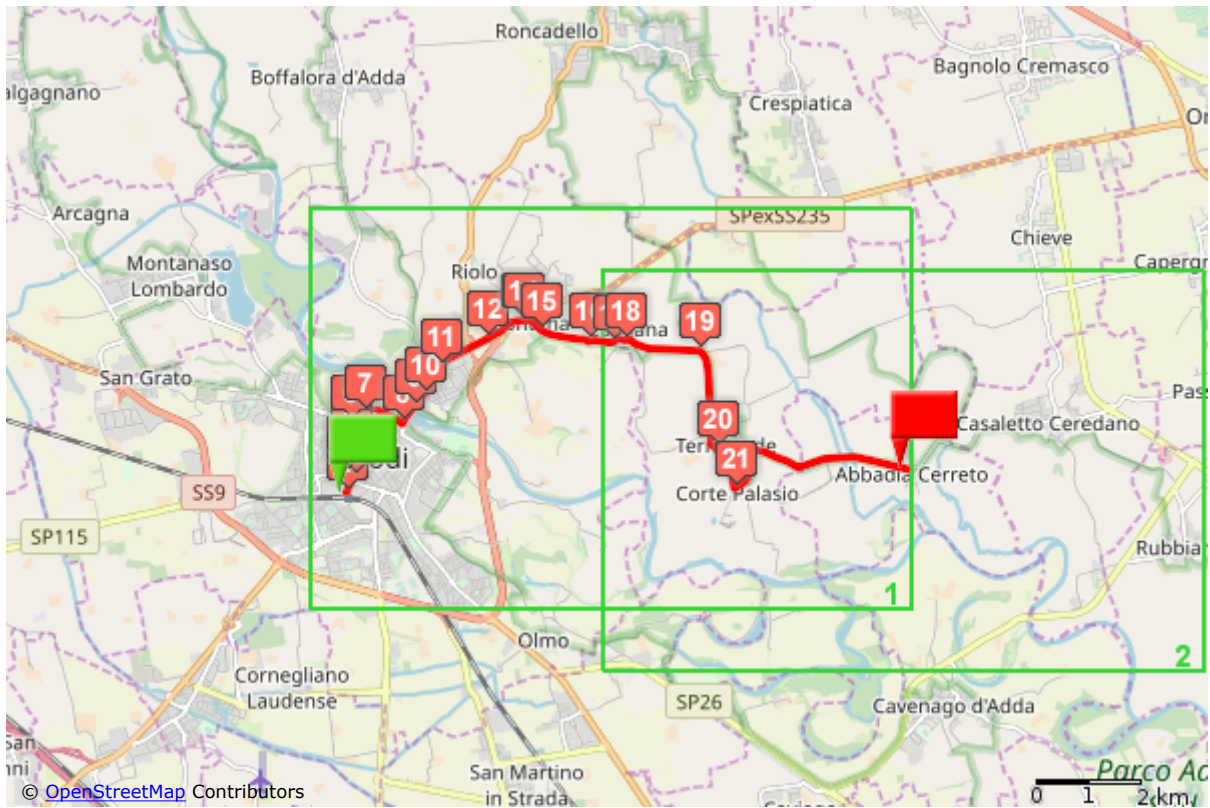
An easy itinerary to reach the beautiful Abbey in Cerreto, admirable example of the Cistercian architecture in Lombardy. Also the old mill deserves a visit: it contains various collections linked to the history and development of the territory.

## Elevation

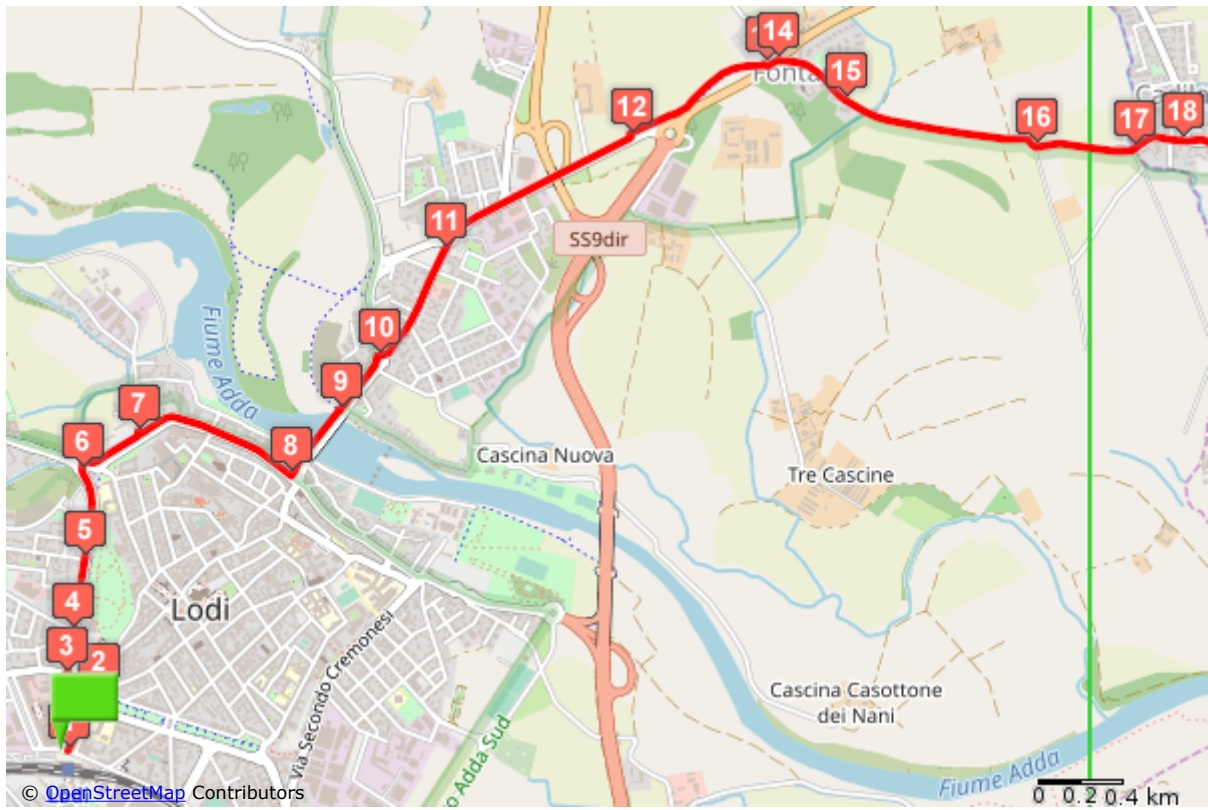


Ref.	Km partial	Km total	Description
	0.0	0.0	from the station take Viale Dante Alighieri
	0.2	0.2	cross via Dante Alighieri and go straight into via dell'Acquedotto
	0.1	0.3	at the roundabout take viale Dalmazia
	0.2	0.5	let's take via Dalmazia northwards to get out of the centre of Lodi
	0.3	0.8	continue on Viale Dalmazia heading North
	0.3	1.1	let's take via Defendente da Lodi
	0.3	1.3	at the traffic light continue downhill on Via Defendente da Lodi
	0.6	1.9	at the street lamp take a left into the cycle path that runs across the river
	0.3	2.2	continue on the cycle path on the opposite side of the bridge on the river
	0.2	2.4	at the roundabout go straight ahead
	0.4	2.8	continue straight ahead following the cycle path that borders the Provincial Road
	0.7	3.6	follow the cycle path on the opposite side of the carriageway
	0.5	4.1	at the end of the cycle path cross the road and continue on the opposite side of the carriageway
	0.1	4.1	right after take a right into Via della Gera d'Adda

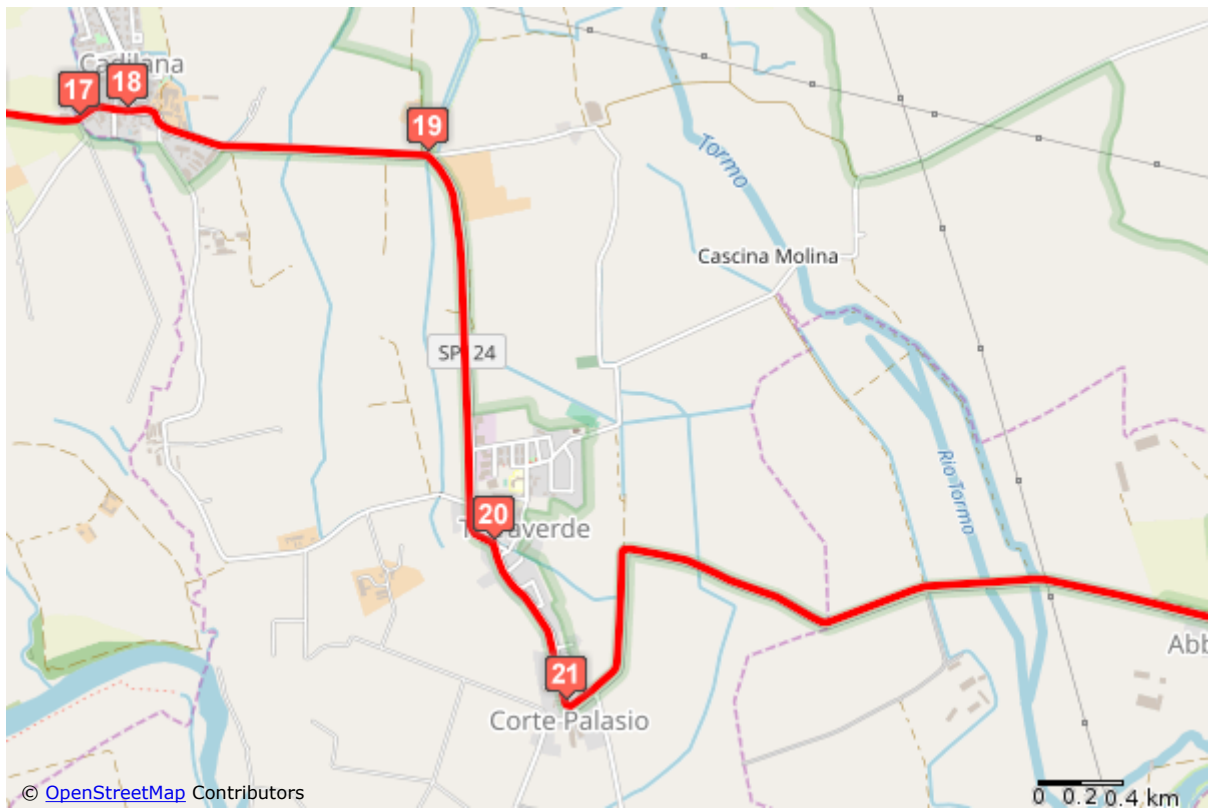
Ref.	Km partial	Km total	Description
15	0.3	4.4	at the end of the paved road continue straight ahead into the unpaved road
16	0.7	5.1	ignore a deviation on the right riding straight ahead towards the country house
17	0.3	5.4	at the end of the cart road keep to the left riding across Cadilana
18	0.2	5.6	at the stop sign continue straight ahead
19	1.1	6.7	keep to the right towards Abbazia Cerreto
20	1.4	8.0	ride across Corte Palasio following the signs to Abbazia Cerreto
21	0.6	8.6	follow the signs on the left to Abbazia Cerreto ignoring the deviation to Casellario
	2.8	11.5	end



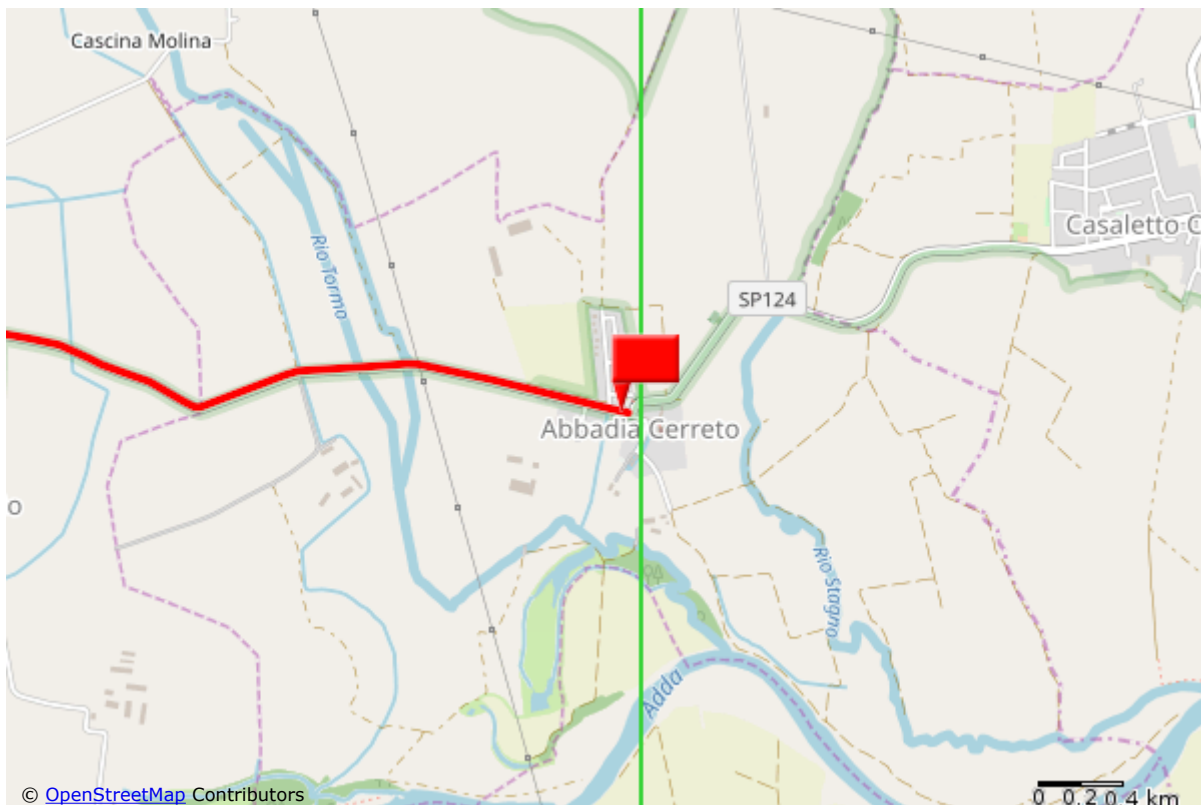
Overview map



Detail map #1



Detail map #2



Detail map #3



Copyright 2014 [Provincia di Lodi](#) - P. IVA 04519260964